



Internet
without unwanted traffic



What is „unwanted“ Internet traffic?

Very often your computer and mobile phone generate Internet traffic, which you are unaware of. The reasons for that are different:

- The using of e-mail software
- The using of programs/applications for communication in real time
- Sending and receiving MMS messages
- Automatic updates of programs and applications

If you are using mobile internet, the generated traffic which you are unaware of is accounted and calculated. If you are abroad, the traffic made in roaming is calculated according to the used operator prices. This might be the reason your invoice to be much higher than expected. Also the unwanted traffic can slow down the speed of your internet connection via computer or mobile phone.

How that is unwanted traffic generated?

E-mail applications – they give the opportunity to send/receive e-mail messages on your mobile phone and computer. To limit the traffic generated from such applications, you have to be sure that your e-mail application is set to:

- Receive/send you e-mail messages manually (the “push” function is switched off)
- Shows only the subject of the e-mail messages.
- Not to download automatically the attached files
- Not to show pictures (and other multimedia) in the incoming messages
- Send e-mail messages as plain text. Formats like HTML and rich text generates bigger volume data.
- Send all written e-mail messages in one session

Instant Messaging (IM) applications – gives the opportunity for “chat” communication in real time, for example ICQ, Facebook, AIM, Gtalk, Yahoo MySpace, MSN etc.

To limit the traffic generated by IM applications, installed on your computer/mobile phone you have to ensure that your IM application is:

- Switched off when you are not using it
- Set not to start automatically on definite events
- Set not to work in background mode
- Set not to receive automatically messages (We recommend this option to be set when you are in roaming)

GPS applications – Those are all applications/programs which allow position and/or navigate. Such applications are Nokia maps, Google maps, Blackberry maps etc. Many GPS applications for mobile phones are using Internet for faster positioning.

To limit the traffic generated from such applications, you have to be sure that:

- Your navigation/positioning program doesn't need Internet connection.
- The function for faster positioning via Internet is switched off.
- There are not active other applications, which are using your position, and generates Internet traffic, such as Google Latitude.

MMS messages – When you are sending or receiving multimedia messages internet traffic is generated and respectively calculated. This traffic is dependant of the volume of the received/sent multimedia file (picture or music file). Please keep this in mind when you are in roaming.

Automatic update – of programs and applications – Some programs and applications on your mobile phone or computer are set to automatically to connect to Internet and check for available updates.

GLOBUL advises to make all actualizations of your software, while using LAN or Wi-Fi Internet connection. This way you will have the latest actual versions of the programs installed on your computer, without generating unwanted traffic.

To limit the traffic generated by automatic updates of programs and applications, ensure that:

- Automatic updates (or automatic check for newer software) of the operational systems of your computer or cell phone is switched off.
- Automatic update of your antivirus program is switched off.
- There are no active open Internet pages – many Internet pages are updating their content continuously, which leads to continuous data traffic.

To switch off the automatic updates of your computer, follow the steps:

- If you are using Windows XP

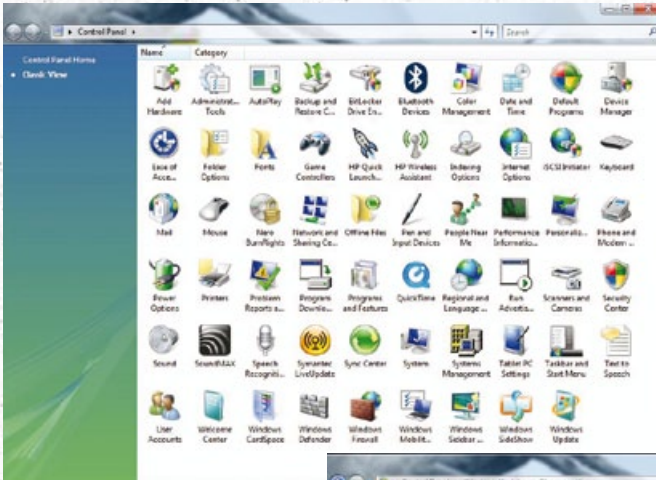


o From Control Panel choose Automatic Updates



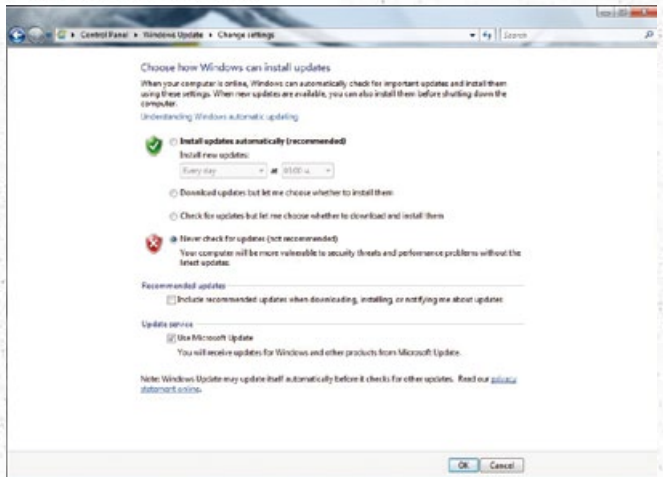
o Choose the option "Turn Off Automatic Updates" and click OK

- If you are using Windows Vista



o From the menu Control Panel, choose Windows Updates

- o Choose the option – “Never check for updates” and click OK



- Is you are using operational system MAC OS



o Open “System Preferences” from the “Dock”



o Select "Software Updates" from the bottom of the window

How can I reduce the unwanted Internet traffic when using mobile phone?

iPhone 3G/3GS

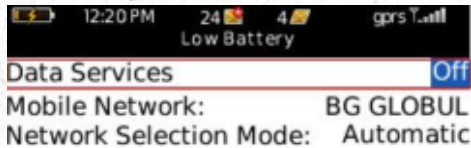
To prevent from unwanted traffic when using iPhone 3G/3GS is necessary to change some of the settings:

- To switch off the unwanted traffic generated from the positioning application "Maps" go into Settings >General and switch off the function "Location Services".
- To switch off the unwanted traffic generated from e-mail messages, go to "Settings"->"Mail, Contacts, Calendars" ->Fetch New Data. Switch off the function "Push" and select "Manually".
- To prevent from all kind of unwanted traffic, while you are in roaming with your iPhone, go to "Settings" ->"General" -> "Network" and switch off the function "Data Roaming".



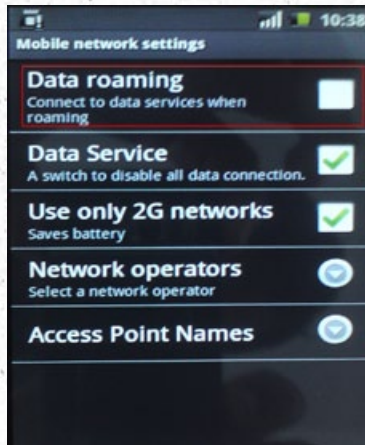
BlackBerry

To prevent from unwanted traffic with your BlackBerry, go to "Options" -> "Mobile Network" and select "Data Services" – "Off".



Phones with operational system Android

To prevent from unwanted traffic with you phone with OS Android go to "Menu" ->"Settings" -> "Wireless controls" ->"Mobile networks". Be sure that the function "Data roaming" is not marked.



Can I use additional software to track the generated traffic?

There are a few "free of charge" software programs, which you may use to track down the download and upload traffic. GLOBUL recommends using the software NetMeter. It is free of charge and gives you the opportunity to track the downloaded and uploaded Internet traffic. It allows you to track down the generated traffic and separate it according the way it is generated through – LAN, Wi-Fi and GPRS on the computer the software is installed to. Some additional characteristics of NetMeter are:

- o Graphics with the downloaded and uploaded traffic.
- o Setting of reporting period.
- o Information message, upon reaching preliminary limit in KB, MB or GB.
- o Detailed statistic on daily, weekly and monthly basis.
- o Possibility for export in *.csv fail

Remark: Please have in mind that the program NetMeter will also track the traffic generated through other modem used on your computer. NetMeter software belongs to Readerror. Using, distributing, copying and storing by third parties is a subject of a treaty with Readerror. GLOBUL is not responsible for any kind of damage to your computer or the information stored on it as a result of using, installing, copying or any other actions related to NetMeter, as well as incorrect measurement of the traffic generated through the 3G Connect Center.

Additional precautions you might do in order to limit the traffic:

- Block the flash animations and video clips from the Internet pages.
- Block the advertising banners in the pages (for example Adblock in Firefox web browser).
- Limit or stop torrent programs.
- Stop the updates of the antivirus software while you use 3G Connect Center.

