

Instructions for installing BlackBerry® Connect™ software and activating BlackBerry® Internet Service on Sony Ericsson (M600i/W950i/P990i)

➤ Preliminary requirements:

- Installed PC suite for your cell phone
- SIM card with activated BlackBerry® service
- Actual software version for your cell phone

Important: To use BlackBerry® service you need to activate BlackBerry® Internet Service from GLOBUL, installed BlackBerry Connect™ software on your phone and to have created an account in BlackBerry® web portal of GLOBUL (www.globul.blackberry.com).

You can download the necessary “.sis” file from the following links, depending on your phone model:

Sony Ericsson M600i

(<http://www.sonyericsson.com/cws/support/softwaredownloads/detailed/blackberryconnect/m600i?cc=gb&lc=en>)

Sony Ericsson W950i

(<http://www.sonyericsson.com/cws/support/softwaredownloads/detailed/blackberryconnect/w950i?cc=gb&lc=en>)

Sony Ericsson P990i

(<http://www.sonyericsson.com/cws/support/softwaredownloads/detailed/blackberryconnect/p990i?cc=gb&lc=en>)

Sony Ericsson P1i

(<http://www.sonyericsson.com/cws/support/softwaredownloads/detailed/blackberryconnect/p1i?cc=gb&lc=en>)

1. Installing the BlackBerry® Connect™ software on the phone

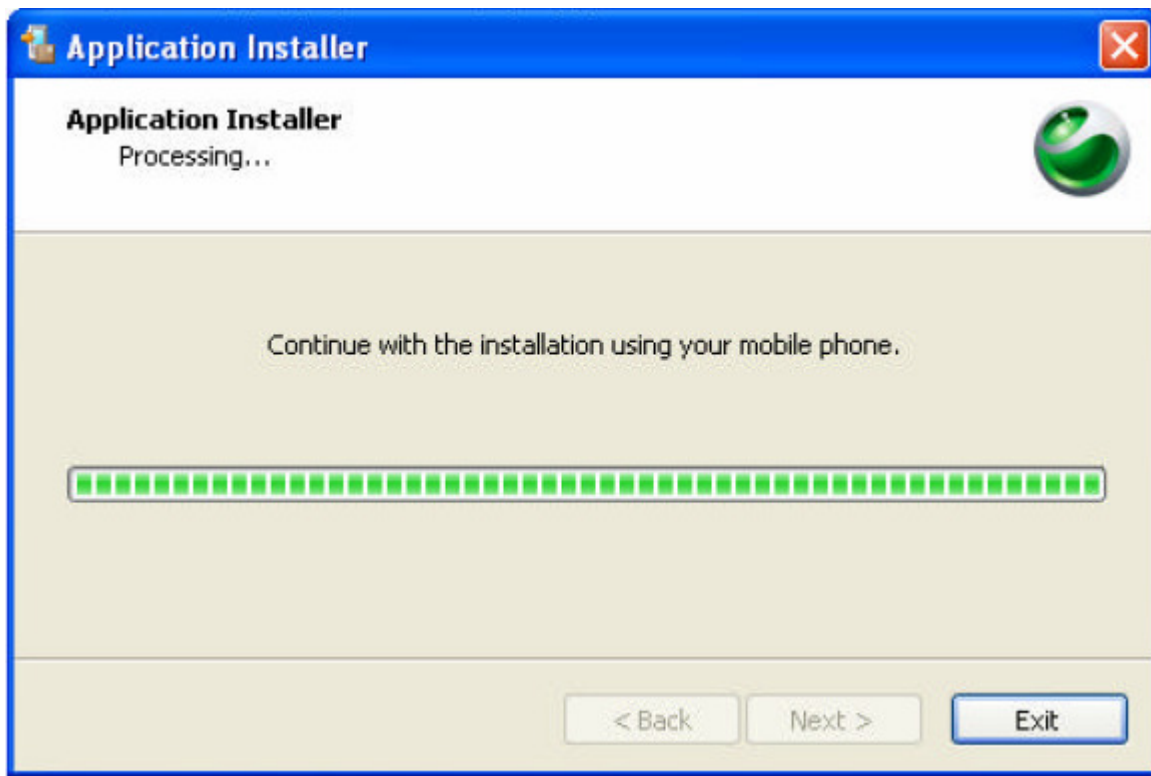
1.1 Connect your phone to the computer via data cable.

1.2 To install the “.sis” file on your phone double click on the following icon.

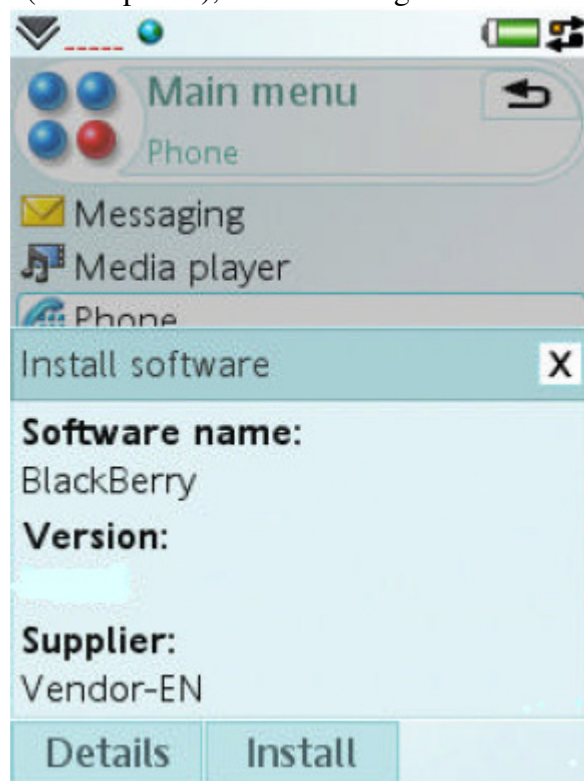


1.3 Click “Next”.

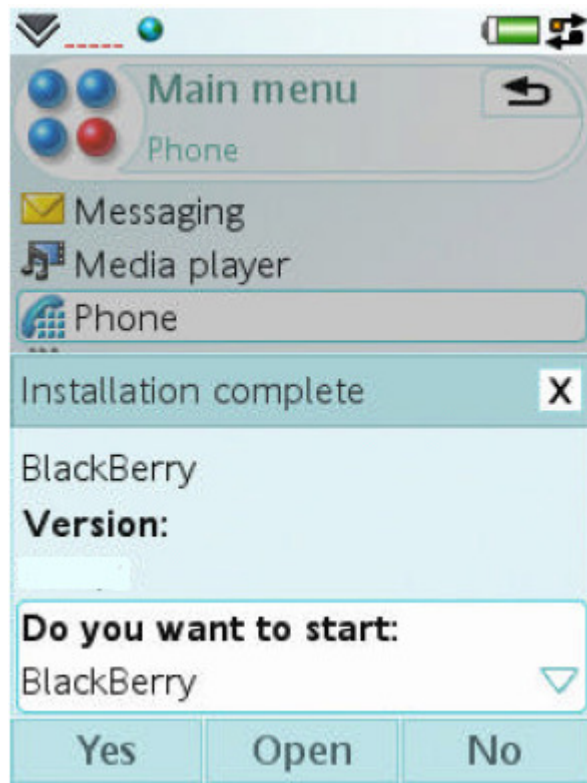
1.4 Click “Exit”, to continue the installation on your cell phone.



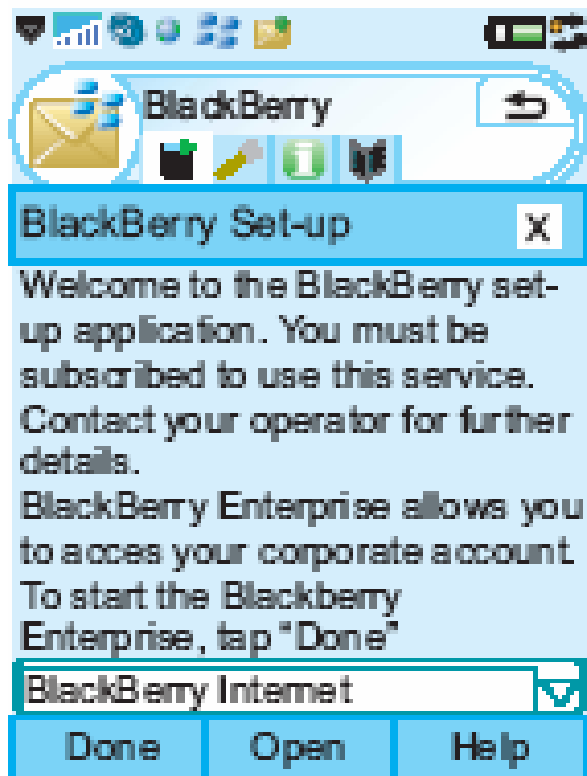
1.5 Click **“Install”** (on the phone), for continuing the installation



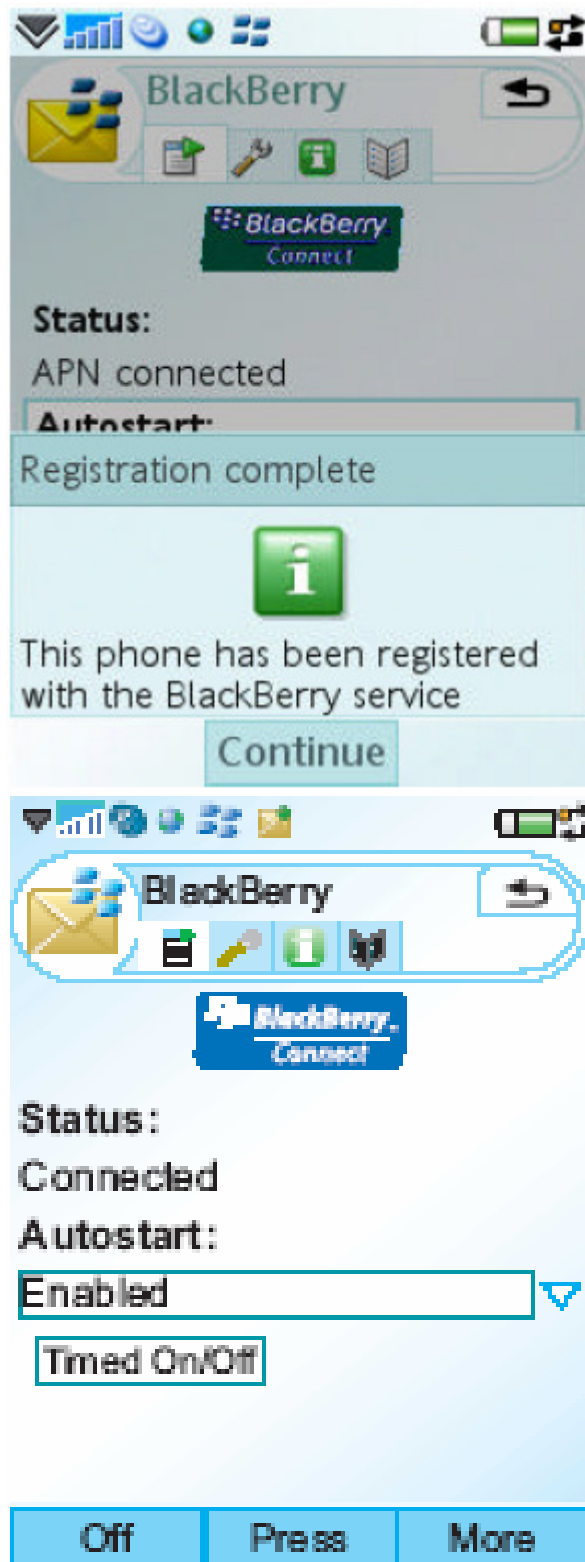
1.6 Click **“Yes”**, to start the application on the phone (if “Attachment Viewer” has been selected choose “BlackBerry” from the drop-down menu)




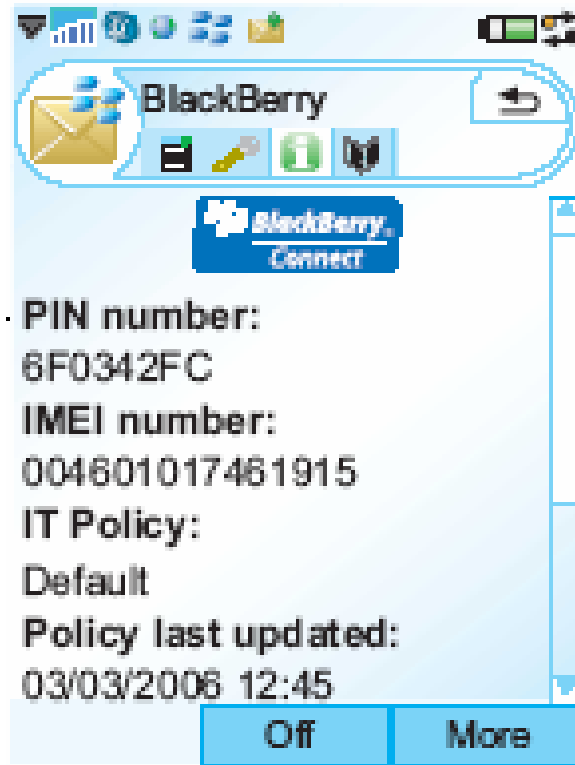
1.7 Select “BlackBerry Internet” from the drop-down menu. Click “Done”



1.8 The phone has to be “Connected”. Click “Continue”

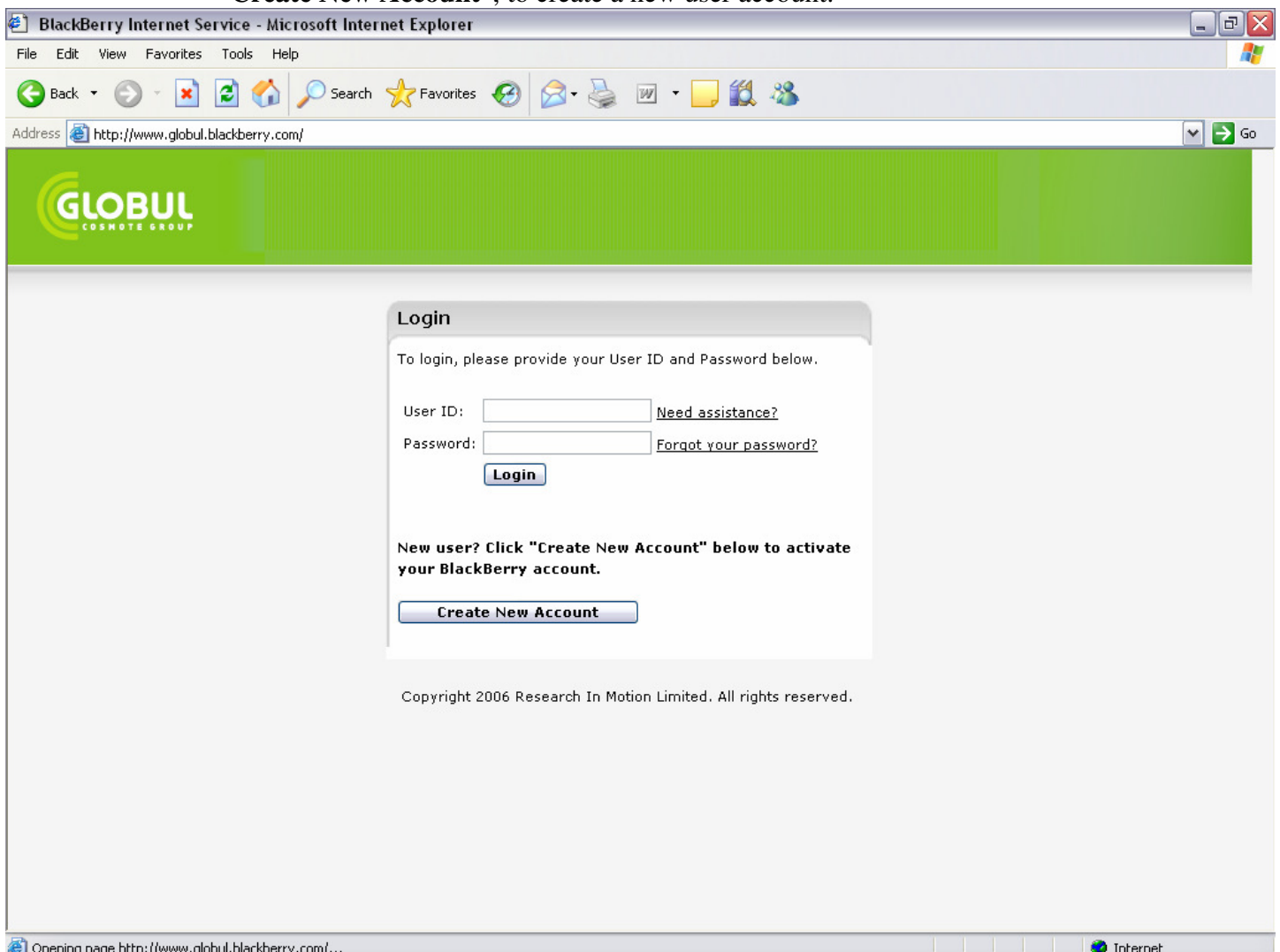


1.9 To see the PIN and IMEI of you phone (you will need PIN and IMEI, for register for using the service in BlackBerry® web portal of GLOBUL), click the icon 

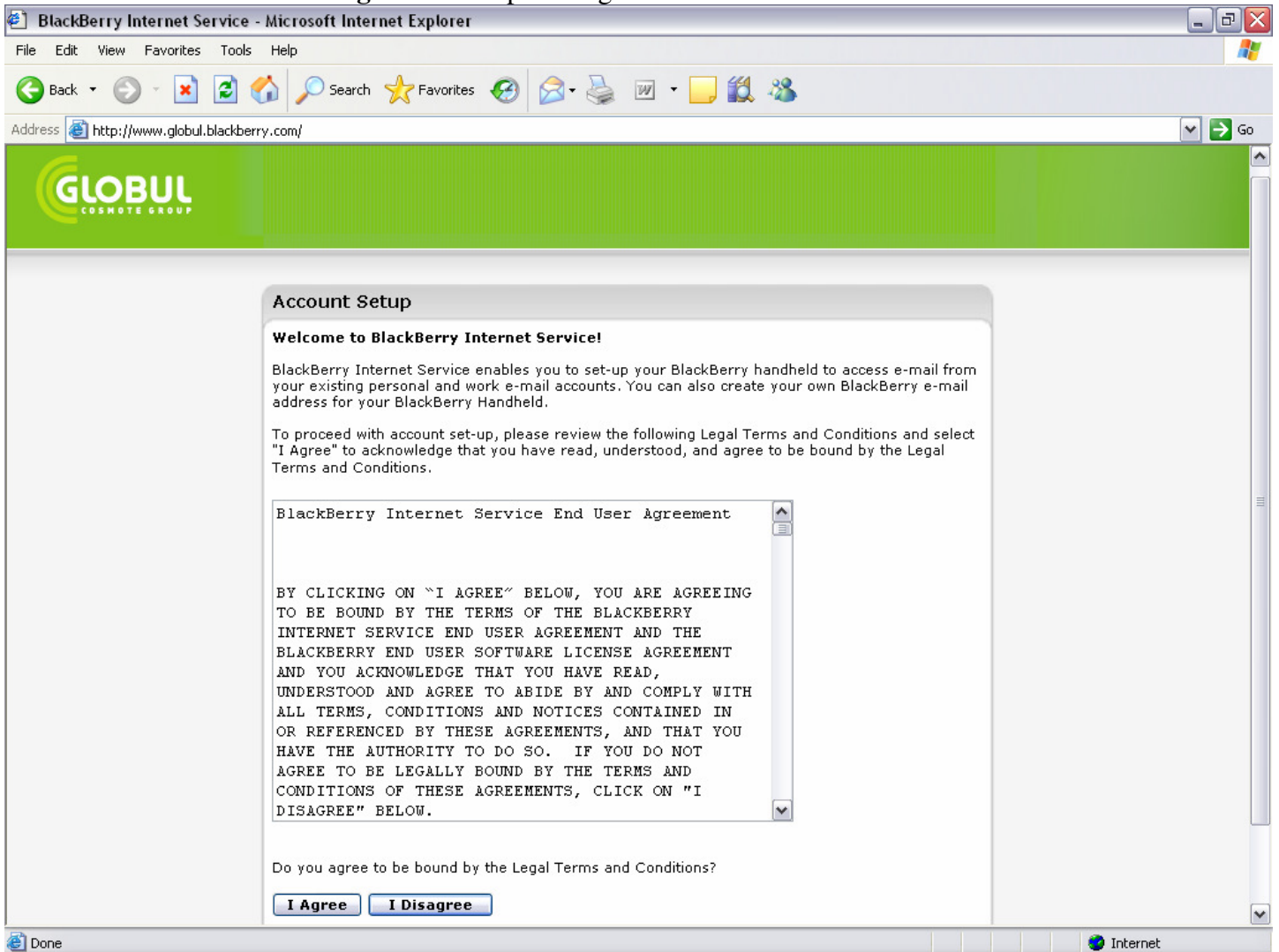


2. Creating accounts in BlackBerry® web portal of GLOBUL. (To register for using the service please follow these steps)

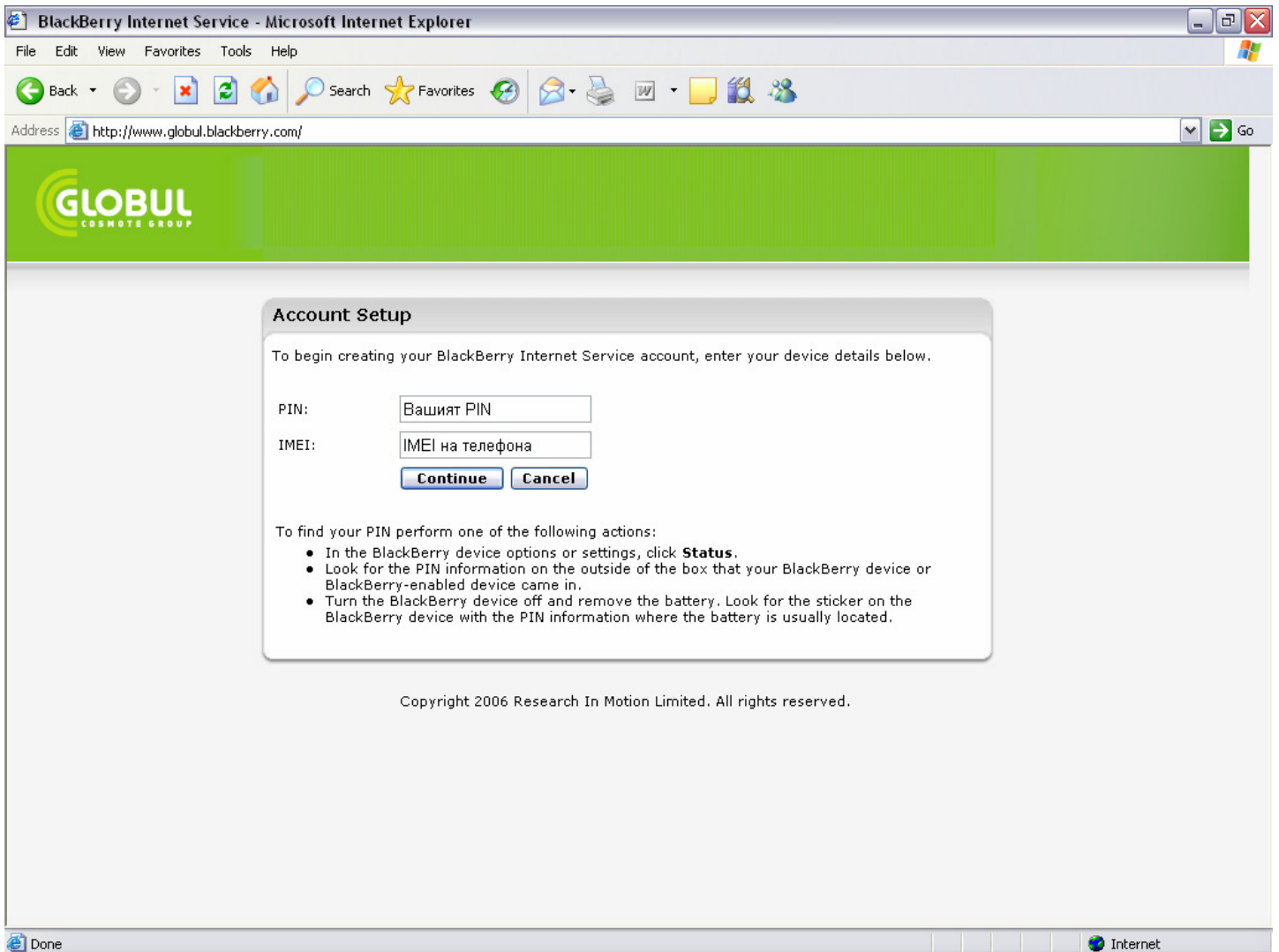
2.1 Go to BlackBerry® web portal of GLOBUL <http://www.globul.blackberry.com>. Select “**Create New Account**”, to create a new user account.



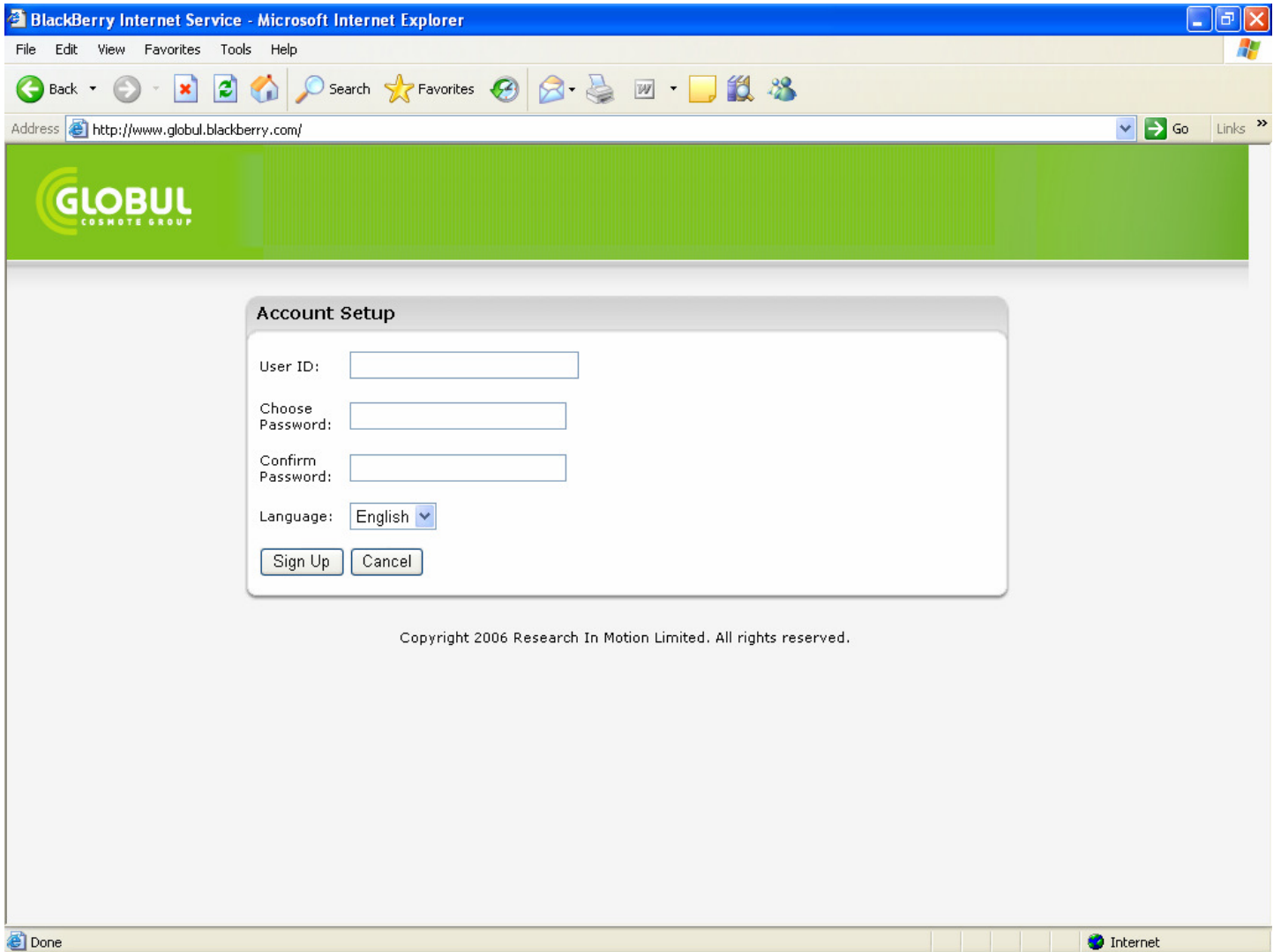
2.2 Choose “I Agree” to accept the legal terms and conditions



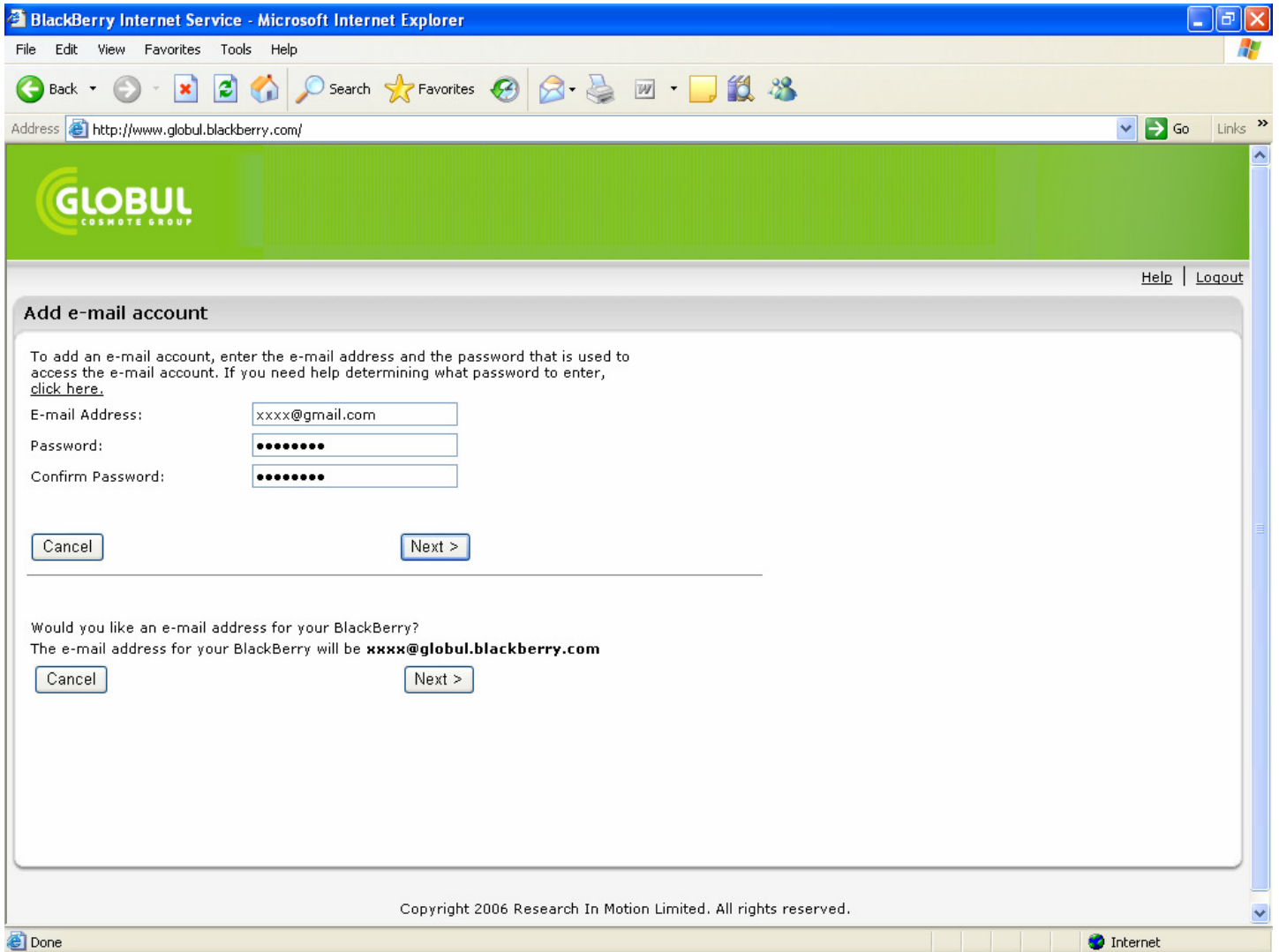
2.3 Enter PIN and IMEI of your phone (from step 1.9). Click “Continue”



2.4 In the first field (User ID :) write user name. In the second field (Choose Password :) write password. In the third field (Confirm Password :) re-write the password. Click “**Sign Up**” to create the account.



2.5 Enter your e-mail address (user@mail.bg; user@yahoo.com; user@gmail.com; POP3, IMAP4). In the first field write entire e-mail address. In the second field write the password. In the third field re-write the password of your e-mail. For using already created account “Next”



- If you want to create a new BlackBerry® e-mail address (containing your user name user@globul.blackberry.com), click “Next” (under your new BlackBerry® e-mail address user@globul.blackberry.com)

2.6 You’ll receive confirmation message for successful e-mail account configuration. Now you can send and receive e-mails from your cell phone.

BlackBerry Internet Service - Microsoft Internet Explorer

File Edit View Favorites Tools Help

Back Forward Stop Refresh Home Search Favorites Print Mail Word Pad Help

Address <http://globul.blackberry.com/> Go

GLOBUL
COSMOTE GROUP

Help | Logout

BlackBerry

Services

- ▶ E-mail Accounts

Settings

- Change Handheld
- Language
- Password
- Service Books

E-mail Accounts

Manage the accounts you are using with your BlackBerry handheld.

Valid E-mail Account Edit Filters Delete

✓ **Вашият имейл адрес**

Existing E-mail Setup an existing handheld.

Setup Account

BlackBerry Address Create an address

Create Address

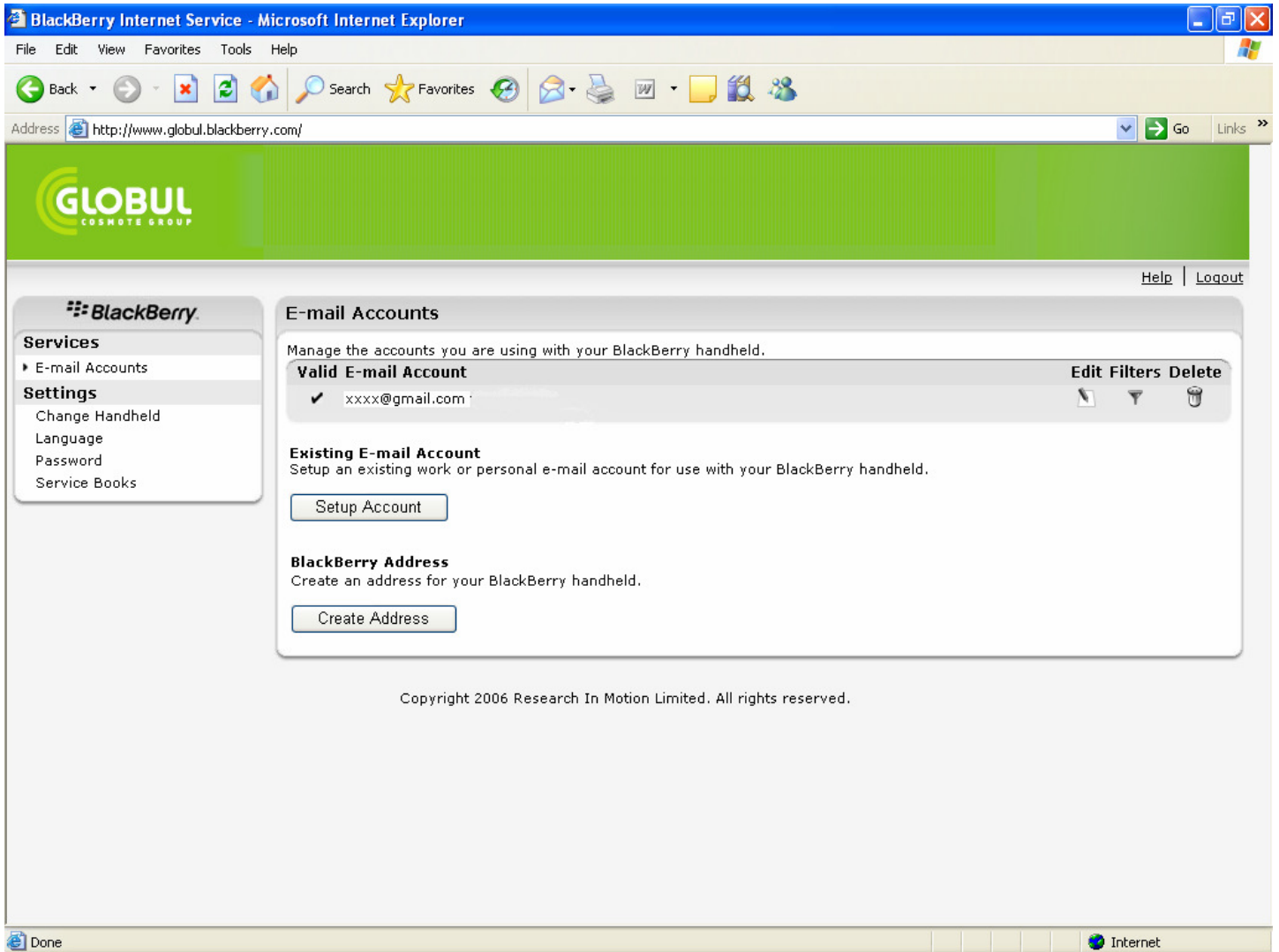
Microsoft Internet Explorer

You have successfully configured access to: **Вашият имейл**

OK

Copyright 2006 Research In Motion Limited. All rights reserved.

Done Internet



2.6.1 With your account you can:

- Add more e-mail addresses (maximum 10 POP3, IMAP4 registered e-mails) by pressing the button “**Setup Account**”
- Create new BlackBerry® e-mail address user@globul.blackberry.com by pressing the button “**Create Address**”
- Change your device, by choosing “**Change Handheld**” (Enter PIN and IMEI of the new device and click “**Save**”)
- Change the password for accessing your account. Choose “**Password**”(In the first field write the new password, in the second field re-write the new password. Click “**Save**”)
- If you have problems in sending and receiving e-mails form your device, choose “**Service Books**” (click on “Send Service Book”)