

# Instructions for installing BlackBerry® Connect™ software and activating BlackBerry® Internet Service on HTC

➤ Preliminary requirements:

- Installed Microsoft® ActiveSync® v4.1 (or later) on your computer.
- SIM card with activated BlackBerry® service.
- Actual software version for your cell phone (Windows® Mobile™ v.6.x)

**Important:** To use BlackBerry® service you need to activate BlackBerry® Internet Service from GLOBUL, installed BlackBerry Connect™ software on your phone and to have created an account in BlackBerry® web portal of GLOBUL ([www.globul.blackberry.com](http://www.globul.blackberry.com)).

You can download the necessary application (.exe file) from the following link:

## **1. Installing the BlackBerry® Connect™ software on the phone**

**1.1** Connect your phone to the computer via data cable.

- Microsoft® ActiveSync® starts and connects to your phone.

**1.2** To install the BlackBerry® application on your phone double clicks on the downloaded (.exe) file.

**1.3** Click “Next”.

**1.4** Click “Install”.

**1.5** In the Application Downloading Complete dialog box, click “OK”

**1.6** Click “Finish”.

**1.7** Restart your phone.

**1.8** To create BlackBerry® account in BlackBerry® web portal of GLOBUL ([www.globul.blackberry.com](http://www.globul.blackberry.com)) you will need PIN and IMEI numbers. To see the PIN and IMEI numbers of your phone follow the steps:

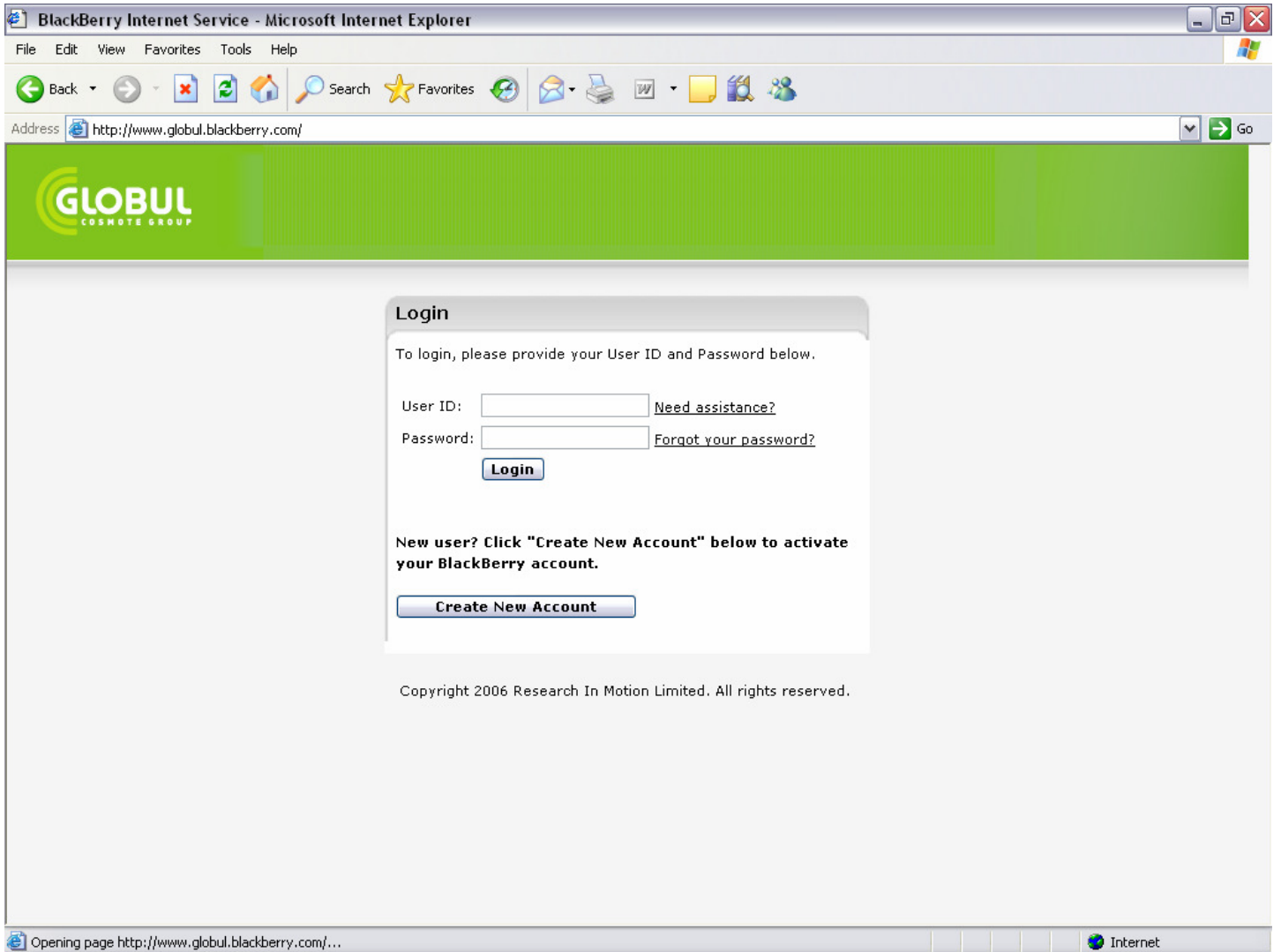
**1.8.1** Click “Start” -> “Settings”;

**1.8.2** Click “System”;

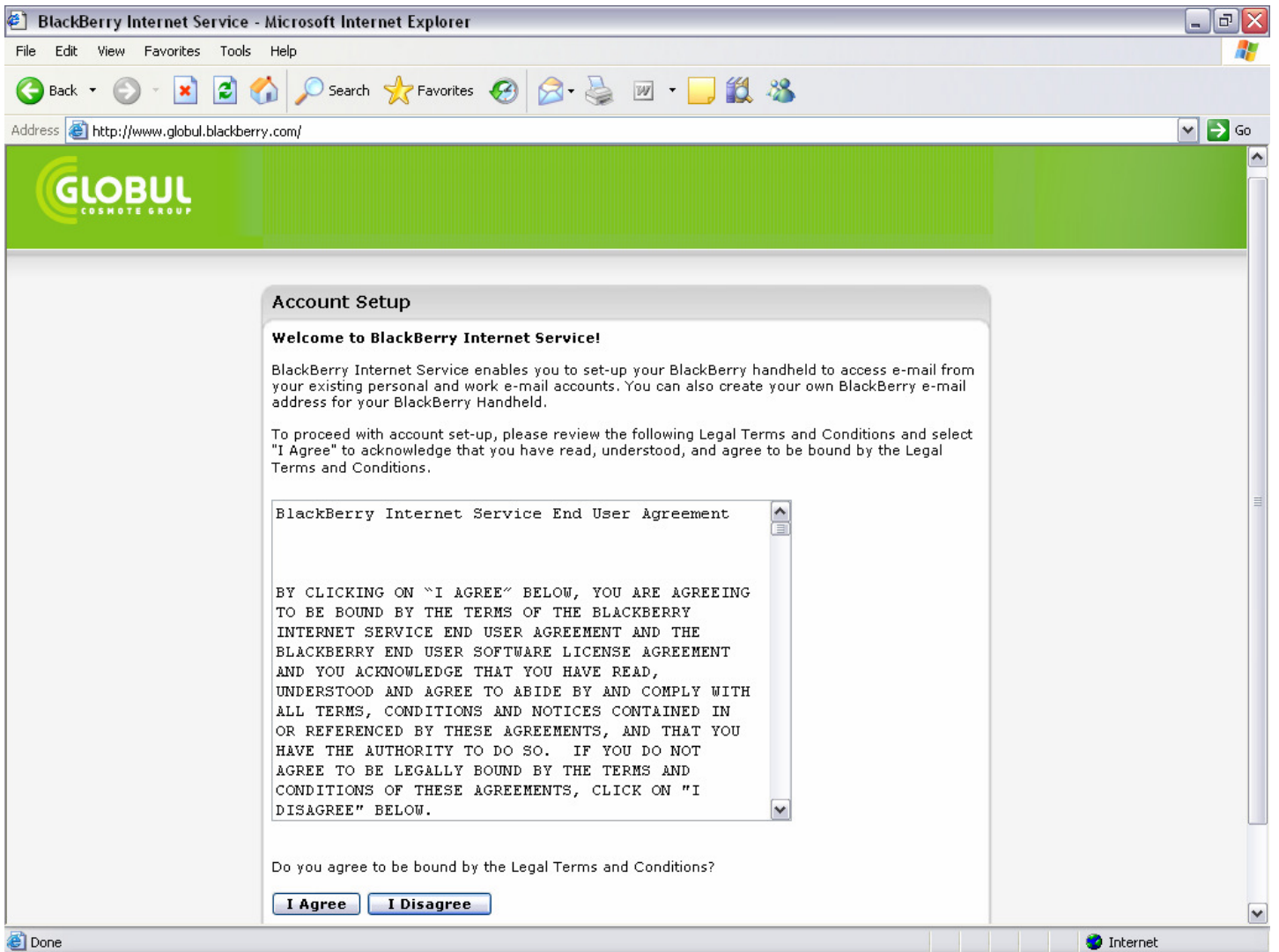
**1.8.3** Click “BlackBerry®” icon;

## ***2. Creating accounts in BlackBerry® web portal of GLOBUL. (To register for using the service please follow these steps)***

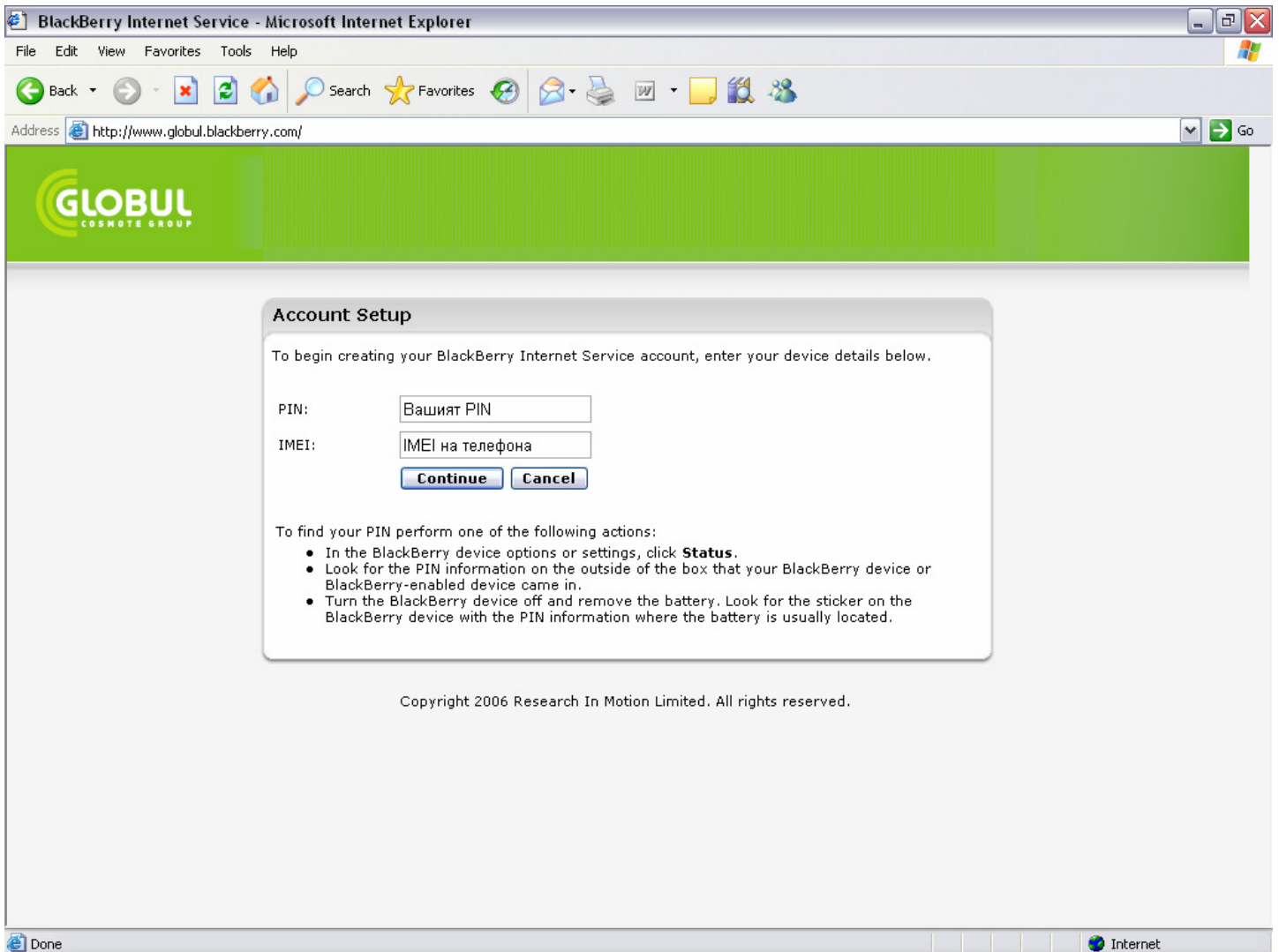
**2.1** Go to BlackBerry® web portal of GLOBUL <http://www.globul.blackberry.com>. Select “Create New Account”, to create a new user account.



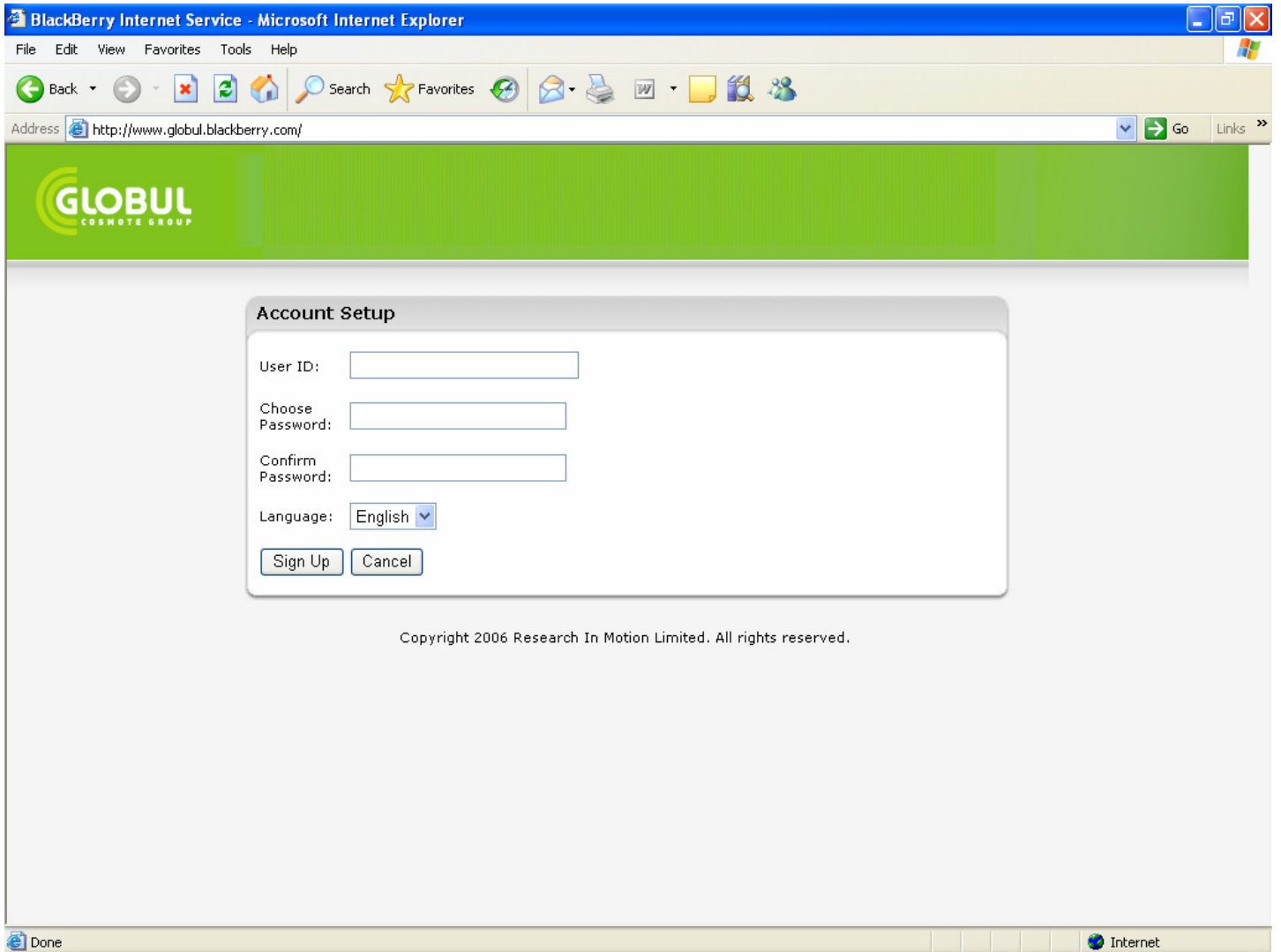
2.2 Choose "I Agree" to accept the legal terms and conditions



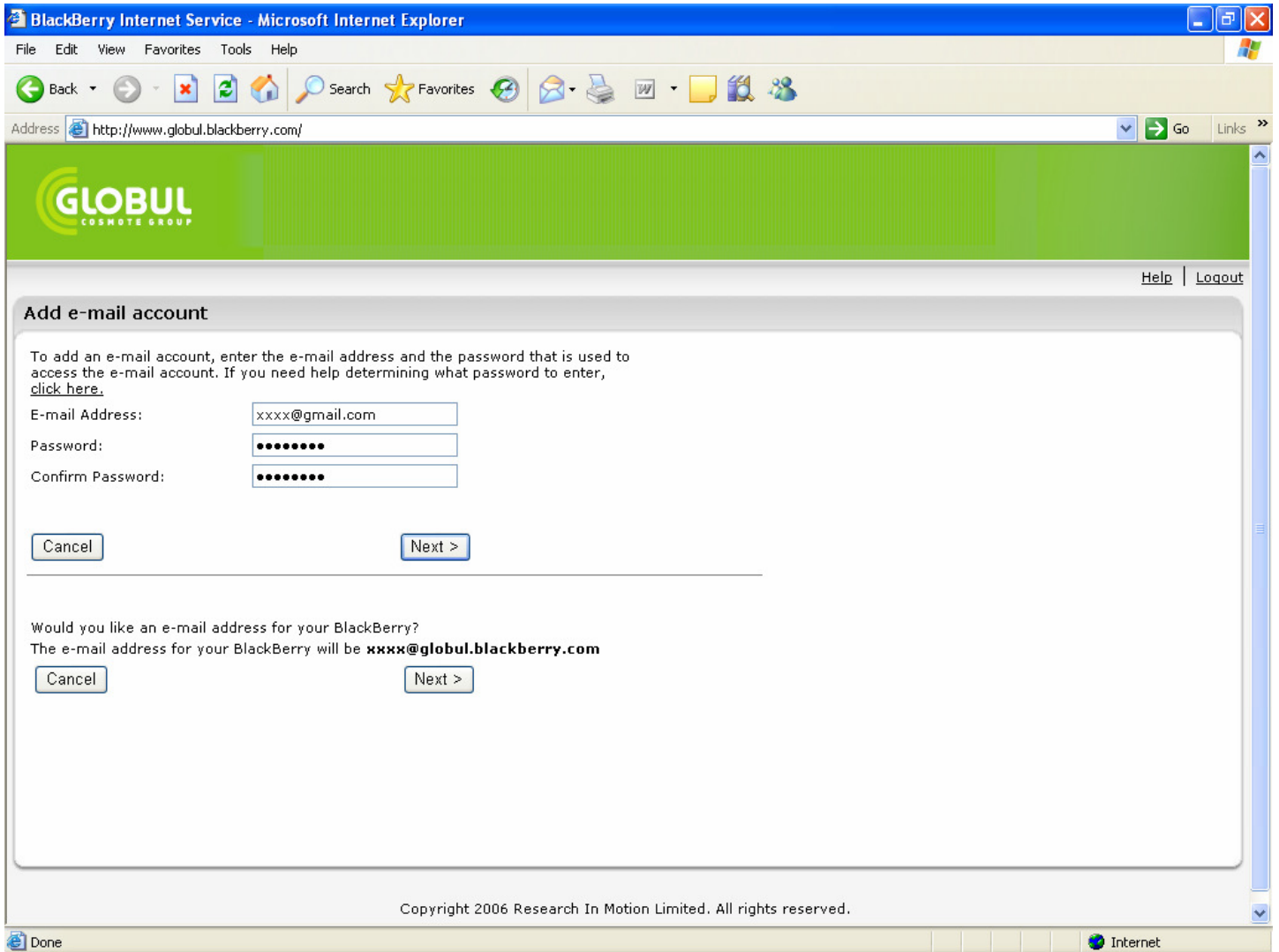
**2.3** Enter PIN and IMEI of your phone (from step 1.8). Click “**Continue**”



**2.4** In the first field (User ID :) write user name. In the second field (Choose Password :) write password. In the third field (Confirm Password :) re-write the password. Click “**Sign Up**” to create the account.



2.5 Enter your e-mail address ([user@mail.bg](mailto:user@mail.bg); [user@yahoo.com](mailto:user@yahoo.com); [user@gmail.com](mailto:user@gmail.com); POP3, IMAP4). In the first field write entire e-mail address. In the second field write the password. In the third field re-write the password of your e-mail. For using already created account “Next”



- If you want to create a new BlackBerry® e-mail address (containing your user name [user@globul.blackberry.com](mailto:user@globul.blackberry.com) ), click “Next” (under your new BlackBerry® e-mail address [user@globul.blackberry.com](mailto:user@globul.blackberry.com) )

2.6 You’ll receive confirmation message for successful e-mail account configuration. Now you can send and receive e-mails from your cell phone.

BlackBerry Internet Service - Microsoft Internet Explorer

File Edit View Favorites Tools Help

Back Forward Stop Refresh Home Search Favorites Print Mail Word Pad Internet Explorer

Address <http://globul.blackberry.com/> Go

**GLOBUL**  
COSMOTE GROUP

Help | Logout

**BlackBerry**

**Services**

- ▶ E-mail Accounts

**Settings**

- Change Handheld
- Language
- Password
- Service Books

**E-mail Accounts**

Manage the accounts you are using with your BlackBerry handheld.

**Valid E-mail Account** Edit Filters Delete


✓ **Вашият имейл адрес**

**Existing E-mail** Microsoft Internet Explorer

Setup an existing account on your handheld.

**BlackBerry Address**

Create an address for your handheld.

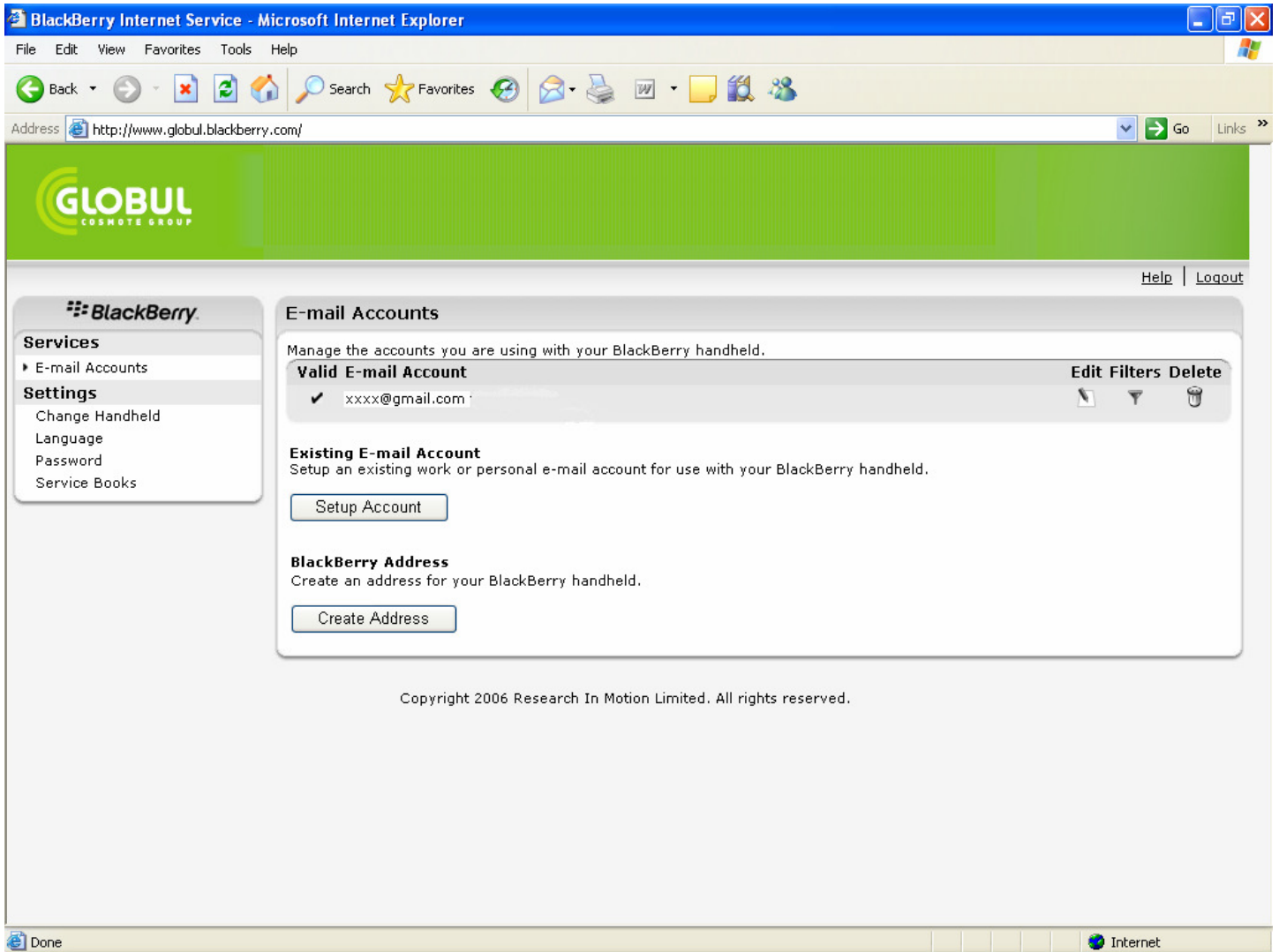
Setup Account  You have successfully configured access to: **Вашият имейл**

OK

Create Address

Copyright 2006 Research In Motion Limited. All rights reserved.

Done Internet



### 2.6.1 With your account you can:

- Add more e-mail addresses (maximum 3 POP3, IMAP4 registered e-mails) by pressing the button “**Setup Account**”
- Create new BlackBerry® e-mail address [user@globul.blackberry.com](mailto:user@globul.blackberry.com) by pressing the button “**Create Address**”
- Change your device, by choosing “**Change Handheld**” (Enter PIN and IMEI of the new device and click “**Save**”)
- Change the password for accessing your account. Choose “**Password**”(In the first field write the new password, in the second field re-write the new password. Click “**Save**”)
- If you have problems in sending and receiving e-mails form your device, choose “**Service Books**” (click on “Send Service Book”)